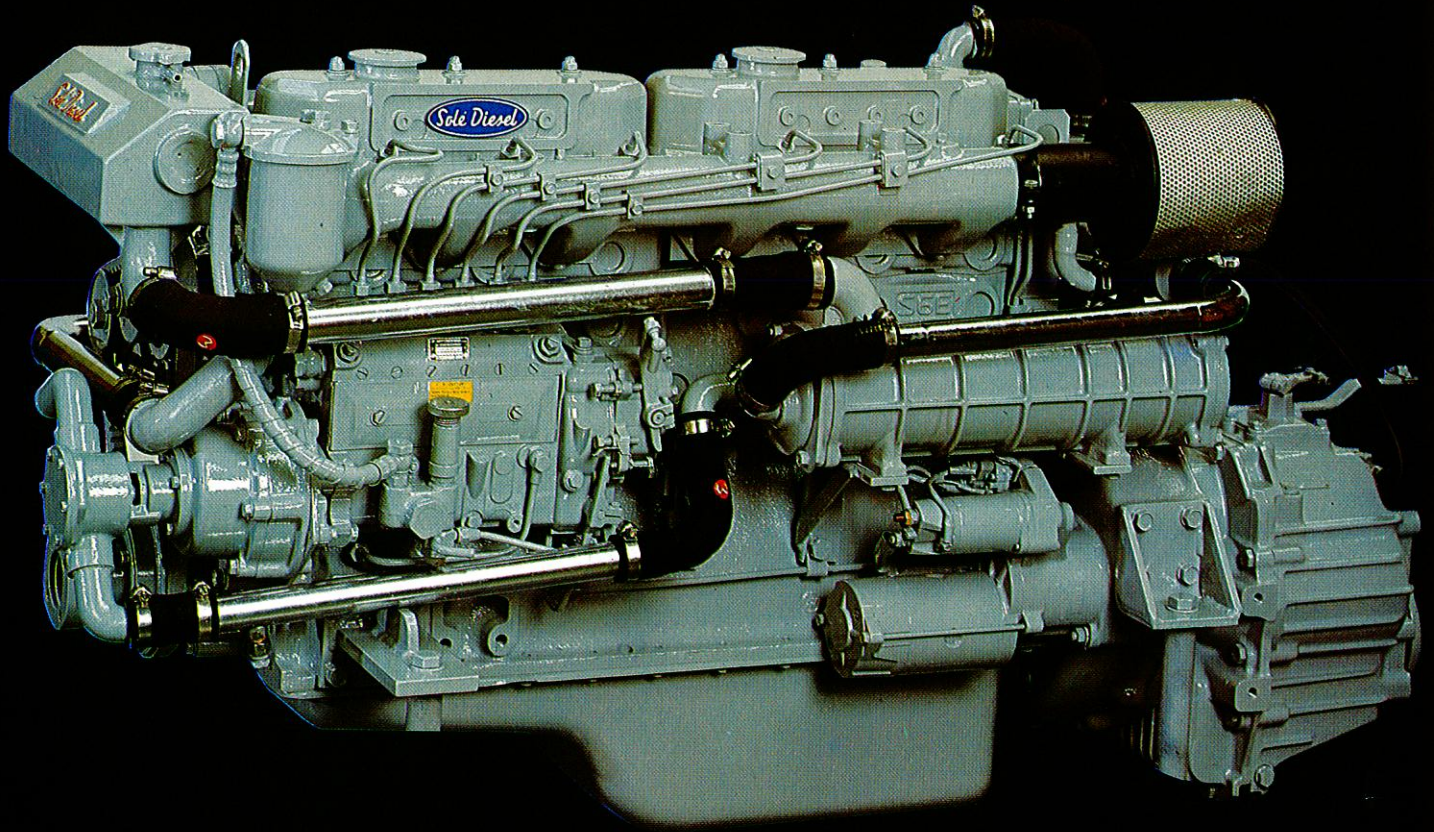


# MARINE DIESEL ENGINE

6 Cylinders

122 HP.



*Sole Diesel*

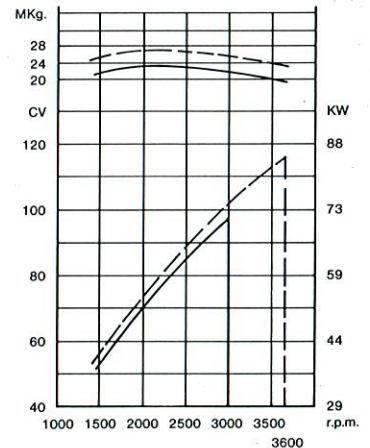
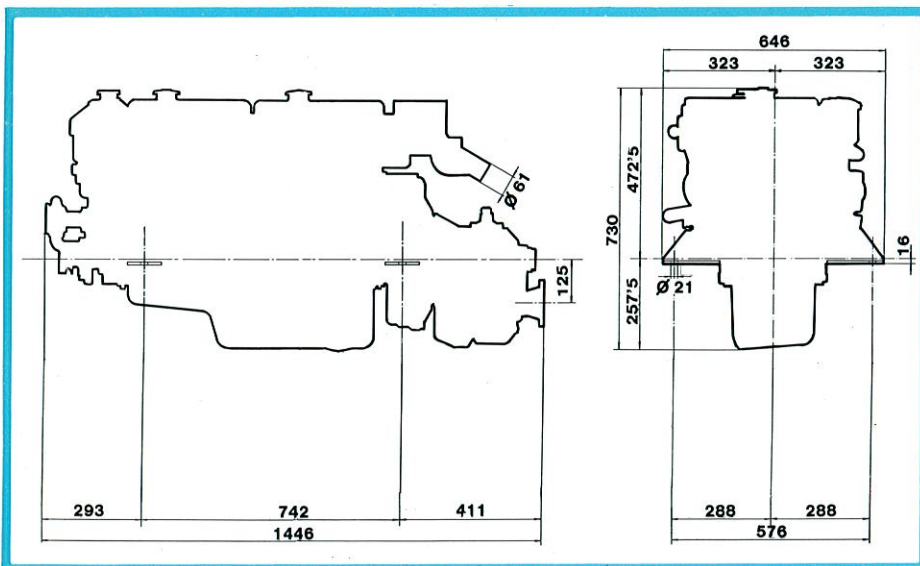
# SM-120 ENGINE

## SPECIFICATIONS:

<b>N.º of cylinders:</b>	6 in line. Naturally aspirated.
<b>Bore × stroke:</b>	98 mm. × 98 mm.
<b>Cylinder volume:</b>	4.400 cm.3
<b>Compression Ratio:</b>	20 : 1
<b>Power:</b>	DIN 6270-A: 98 Hp. (72 Kw.) at 3.000 r.p.m. DIN 6270-B: 116 Hp. (85,3 Kw.) at 3.600 r.p.m.
<b>Combustion Chamber:</b>	Swirl Combustion chamber.
<b>Cooling sistem:</b>	Enclosed fresh water with heat echanger oil cooler, and cooled exhaust manifold.
<b>Electrical equipment:</b>	24 V. Starter 5 Kw. Alternator 30 A. (Optional 12 V. Alternator 50 A.)
<b>Gear box:</b>	Hurth HBW 360, type - Velvet Drive, type. (Ratio 1,5:1 - 2:1 and 3:1).
<b>Weight with gear-Box:</b>	Hurth 480 Kgs. - Velvet Drive 508 Kgs.
<b>Installation angle:</b>	20°

**Standard equipment:** Electric starter and alternator, electric stop, electrical panel with wiring, oil filter, cooled exhaust manifold, and Morse control coupling kits.

**Optional equipment:** Bilge cack, water filter with water trap, Morse remote control, shaft, stern tube and propeller.



PRINTED IN SPAIN - GRAFICAS MARTORELL, S.L. - DEP. LEGAL B-40334

Importer

Dealer